

CATR 11

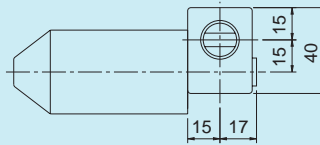
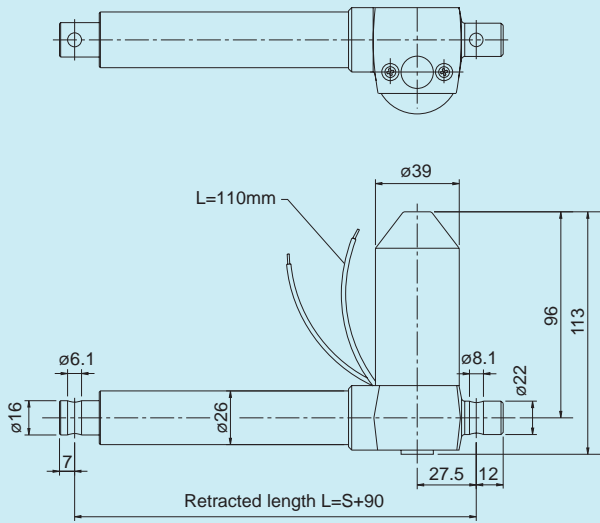


CATR 11

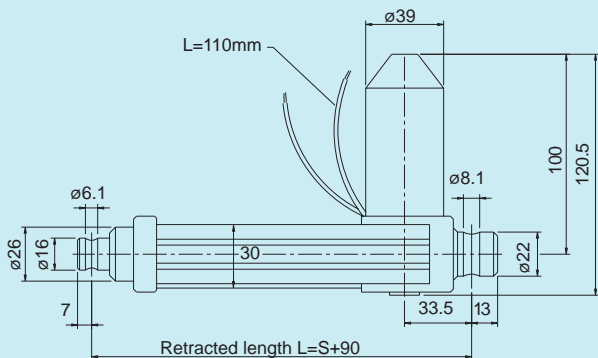
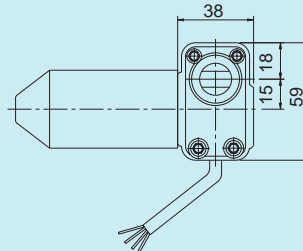
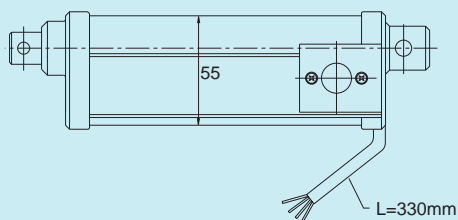
Ideal for limited space applications, the CATR 11 is a compact, robust actuator for industrial use. Being connected through a worm gear assembly, this compact design is highly cost-effective while offering high operating reliability and maintenance-free features.

- Compact design (cost-effective)
- Maintenance-free
- Corrosion resistant design
- High operating reliability
- Adjustable limit switches as option
- Flexible motor orientation

CATR 11... N



CATR 11... M or CATR 11 ... D



Technical Data

Performance

Actuator	Dynamic load (N)	Speed (mm/s)	Max. Current (A)
CATR 11A.../12	500	16-10	5.5
CATR 11A.../24	500	16-10	3.0
CATR 11H.../12	250	32-25	3.5
CATR 11H.../24	250	32-25	1.9
Max static load	800N		
Protection class	IP 54		

Duty factors

No load:	35%
50% dynamic load:	20%
Max. dynamic load:	10%

Options

Adjustable limit switches
Left handed motor orientation

If, in any application there is a risk that the actuator mechanically runs into the end stop, we recommend that you use the limit switch option.

Ordering key for CATR 11 actuator

CATR 11 X		/				
Motor orientation Right-handed motor Left-handed motor	R L					
Speed Low speed actuator (max. 16 mm/s) High speed actuator (max. 32 mm/s)	A H					
Stroke length 50 mm 100 mm 200 mm 300 mm			50 100 200 300			
Motor 12 VDC 24 VDC				12 24		
Options No limit switch Limit switch with cables Limit switch with diodes (internally connected)					N M D	
Rear attachments Hole parallel with the motor Hole turned 90° to the motor						0 9

The specifications and data in this publication are believed to be accurate and reliable.
However, it is the responsibility of the product user to determine the suitability of all products selected for a specific application.
Consult SKF for application support. The right is reserved to make changes without prior notice.



SKF Guiding Systems



SKF Ball & Roller Screws



SKF Actuators

SKF Linear Motion offers a wide range of precision engineered linear motion components, units and systems. In addition to comprehensive product literature and software, SKF offers assistance from experienced linear motion engineers.

Linear Motion has **3 product lines** and a sales organisation based of **10 specialised companies** located in Europe and in the USA.

However the product availability as well as the product application is **provided world-wide by the international SKF Bearing network**. Contact one of the companies below for SKF addresses worldwide.

Austria

Linear Motion

SKF Österreich AG

Phone: +43 22 36 6709-0

Fax: +43 22 36 6709-270

Benelux

SKF Multitec Benelux B.V.

Phone: +31 30 6029029

Fax: +31 30 6029028

Phone sales: +31 30 6029039

Phone distributors: +31 30 6029049

From Belgium/Luxembourg:

Phone: +32 2 5024270

Fax: +32 2 5027336

France

SKF Equipements

Phone: +33 1 30 64 28 28

Fax: +33 1 30 64 41 31

www.linearmotion.skf.com

Germany

SKF Linearsysteme GmbH

Phone: +49 9721 657-0

Fax: +49 9721 657-111

Italy

Multitec

SKF Industrie S.p.A.

Phone: +39 011 957 71

Fax: +39 011 957 73 86

Spain

SKF Productos Industriales S.A

Phone: +34 93 3 77 99 77

+34 93 3 77 99 07

Fax: +34 93 4 74 20 39

Nordic Area

SKF Multitec Sweden

Phone: +46 42 25 35 00

Fax: +46 42 25 35 45/46

Norway, Sales Office

Phone: +47 22 30 71 70

Fax: +47 22 30 28 14

Denmark Sales Office

Phone: +45 75 51 95 77

Fax: +45 75 51 95 66

Finland Sales Office

Phone: +358 94 52 97 54

Fax: +358 94 22 77 65

United Kingdom

SKF Engineering Products Ltd.

Phone: +44 1582 490049

Fax: +44 1582 496574

USA

SKF Motion Technologies

Phone: +1 610 861-4800

Fax: +1 610 861-4811

